

The Tarkine Drive

breathtaking wilderness

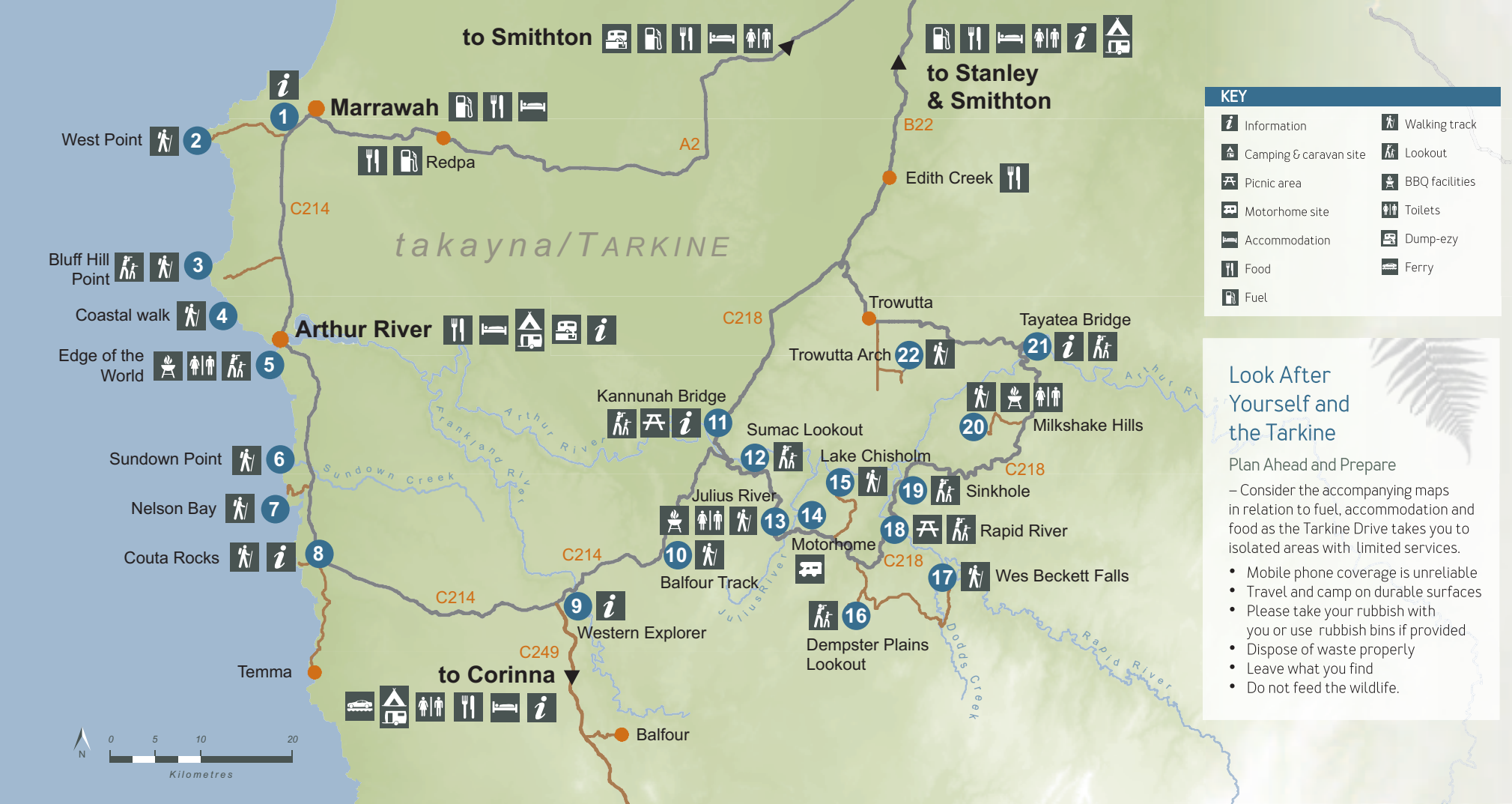


The Tarkine Drive will guide you through the dramatic and breathtaking wilderness of Tasmania's Tarkine region.

You will experience unique fauna and flora, globally significant rainforests, wild river landscapes and dramatic coastlines.

This scenic drive is full of walks, lookouts, sites and picnic spots for you to explore. You may wish to complete the rainforest and the coastal sections separately as day trips, or take two full days to experience the complete drive. Take your time to view the accompanying map and read about the attractions and drive times when planning your trip.





KEY			
Information	Walking track	Lookout	
Camping & caravan site	BBQ facilities	Toilets	
Picnic area	Dump-ezy	Ferry	
Motorhome site			
Accommodation			
Food			
Fuel			

Look After Yourself and the Tarkine

Plan Ahead and Prepare

– Consider the accompanying maps in relation to fuel, accommodation and food as the Tarkine Drive takes you to isolated areas with limited services.

- Mobile phone coverage is unreliable
- Travel and camp on durable surfaces
- Please take your rubbish with you or use rubbish bins if provided
- Dispose of waste properly
- Leave what you find
- Do not feed the wildlife.

DRIVE TIMES AND DISTANCES – TARKINE DRIVE			
FROM	TO	kms	TIME
Arthur River	Couta Rocks	15 km	15 mins
Couta Rocks	Balfour Track	29 km	30 mins
Balfour Track	Sumac Lookout	6 km	10 mins
Sumac Lookout	Julius River	8 km	10 mins
Julius River	Lake Chisholm	8 km	10 mins
Lake Chisholm	Dempster Plains	11 km	15 mins
Lake Chisholm	Wes Beckett Falls	11 km	15 mins
Dempster Plains	Milkshake Hills	32 km	35 mins
Milkshake Hills	Trowutta Arch	26 km	30 mins
Trowutta Arch	Smithton	31 km	30 mins
Kannunah Bridge	Smithton	36 km	35 mins

DRIVE TIMES AND DISTANCES – TOWNS			
FROM	TO	km	TIME
Burnie	Smithton	85 km	1 hour
Devonport	Smithton	134 km	1.5 hours
Launceston	Smithton	231 km	2.5 hours
Stanley	Smithton	21 km	20 mins
Arthur River	Smithton	64 km	1 hour
Arthur River	Corinna	112 km	2.5 hours

- ### Protect our Wildlife
- Many of the animals of the Tarkine are moving about during the day and night. Please drive slowly and help us to protect our precious wildlife.
- ### The Tarkine is a Fire-Sensitive Environment
- Do not discard cigarette butts
 - Use gas barbecues where available
 - Only light fires in properly constructed fireplaces and extinguish after use
 - Observe all published fire restrictions
 - Avoid lighting fires in hot and windy conditions.

- ### Protecting Heritage Sites
- If you come across a heritage site, it is important to follow these practices:
- Leave it undisturbed
 - Do not under any circumstances remove anything – this is an offence and fines can be imposed.



1. Arthur-Pieman Conservation Area

Information and Tarkine Drive entry point

2. West Point Reserve

Walk
Tarkine coast entry point. West Point Reserve is a significant Aboriginal Heritage site. A popular surfing spot that is renowned for its massive waves.

3. Bluff Hill Point

Walk, Lookout
A top vantage point to survey the coast or to walk the short distance to the beaches below.

4. Arthur River Coastal Walk

Walk
Start at the mouth of the Arthur River and walk north along the coast to the Bluff Hill Point Lighthouse. 5 to 6 hours return.

5. Edge of the World

Lookout, BBQ, Toilet
This lookout features an exhilarating view of the Tarkine coast. Easy, 10 minutes.

6. Sundown Point Reserve

Walk
Tarkine coast entry point.

7. Nelson Bay

Walk
Tarkine coast entry point.

8. Couta Rocks

Walk, Information
Information and Tarkine Drive entry point. You can also access the coast here.

9. Western Explorer

Information

10. Balfour Track

Walk
Follow an old packhorse track through stunning cool temperate rainforest. Moderate, 3 hours.

11. Kannunah Bridge

Information, Lookout, Picnic Area
A lovely spot for a picnic and to view the rapids and reflections of the Arthur River.

12. Sumac Lookout

Lookout
A breathtaking view over the majestic Arthur River and the surrounding cool temperate rainforest. Easy, 10 minutes.

13. Julius River

Walks, BBQ, Toilet
Enjoy a barbecue or picnic at this enchanting rainforest and river site where there are two easy rainforest walks. 30 minutes and 1 hour.

14. Julius River Motorhome site

Caravan / Motorhome

15. Lake Chisholm

Walk
A picturesque short walk through tall trees and mixed forest leads you to one of the finest examples of a flooded sinkhole in Australia. Easy, 30 minutes.

16. Dempster Plains

Lookout
Expansive views over buttongrass plains to the interior mountains and hills of the Tarkine. Easy, 10 minutes.

17. Wes Beckett Falls

Walk
This short walk showcases one of the most spectacular waterfalls in the Tarkine. Take care on the steep track. Moderate, 1 hour.

18. Rapid River

Lookout, Picnic Area
A scenic spot to have a picnic alongside the tannin-stained Rapid River.

19. Sinkhole

Lookout
An intriguing flooded sinkhole with its dark waters and stunning reflections.

20. Milkshake Hills

Walks, BBQ, Toilet
Stop for a bite to eat at the unique picnic shelters nestled in the rainforest. Two easy walks. 30 minutes and 1 hour.

21. Tayatea Bridge

Information, Lookout
A great spot to view the wild Arthur River.

22. Trowutta Arch

Walk
A short walk through lovely rainforest takes you to an extraordinary and rare geological feature. Easy, 30 minutes.

Discover the Tarkine
www.discoverthetarkine.com.au

Stanley Visitor Centre:
www.stanley.com.au

Tasmania's North West:
www.tasmaniasnorthwest.com.au

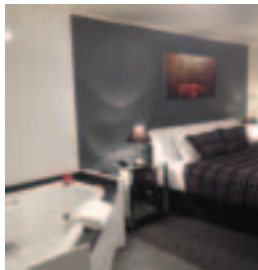




Arthur River Spa Cottage

20 GARDINER STREET,
ARTHUR RIVER TAS 7330
PH: Michael on 0418 595 314
truvalu@eftel.com.au
www.tassiecottages.com.au

This recently refurbished three-bedroom waterfront beach house offers modern comfort amongst the wild Arthur River landscape.



*Absolute waterfront
self-contained accommodation*

Features include:

- Waterfront location
- Large spa bath
- Open fire
- Wood fire in outdoor living area
- King size bed
- Open plan
- Sleeps up to 10
- Wildlife at your doorstep



Tarkine Fresh Oysters

21-25 WEST ESPLANADE
SMITHTON TAS 7330
PH: 03 6452 2262
admin@bboyster.com.au

Enjoy some of the freshest oysters in the world! Seasonal unshucked oysters for sale weekdays.



'Arties' Cottage

157 ARTHUR RIVER ROAD
MARRAWAH TAS 7330
PH: 0411 020 203 or 0428 672 796
artiesmarawah@bigpond.com
www.edgeofthetarkine.com.au

Self-contained quality three bedroom cottage on two acres. Secluded landscaped native bush with abundant wildlife.



A R Reflections River Cruises

4 GARDINER STREET
ARTHUR RIVER TAS 7330
PH: 03 6457 1288 M: 0429 842 454
arreflections@bigpond.com
www.arthurriver.com.au

Enjoy a 6 hour Arthur River eco-cruise into the heart of the Tarkine on board "M.V. Reflections"



Osborne Aviation Services

OSBORNE HELIPORT
(Cnr Bass Highway and Stanley turnoff)
STANLEY TAS 7331
PH: 03 6458 3434
admin@osborneaviation.com
www.osborneaviation.com

Remote Tarkine adventures including fishing, kayaking, hiking and photography packages or just a scenic flight.



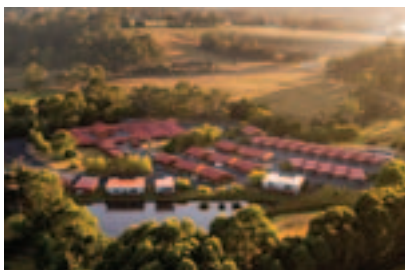
Corinna Wilderness Experience

CORINNA TAS 7469
PH: 03 6446 1170
sales@corinna.com.au
www.corinna.com.au

A remote eco-tourism destination, located on the banks of the majestic Pieman River, deep within the Tarkine. Corinna offers breathtaking wilderness experiences.



- Wilderness retreats (bookings essential)
- Camping facilities (bookings essential)
- Tannin Restaurant (bookings essential)
- River Cruises down the Pieman River
- Kayaking and fishing
- Wide range of walks
- Waterfalls
- Car barge across the Pieman River to Strahan
- Wildlife experiences



Tall Timbers Tasmania

5-15 SCOTCHTOWN ROAD
SMITHTON TAS 7330
PH: 03 6452 9000
or toll free 1800 628476
enquiries@talltimbershotel.com.au
www.talltimbershotel.com.au

Suites and 1 & 2 bedroom self-contained apartments.



Relax, Explore and Discover...

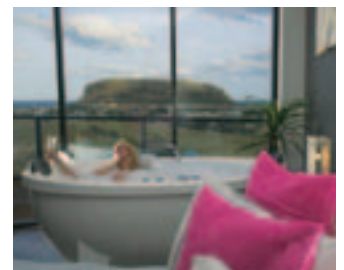
- Fully guided 4WD Tarkine Adventure Tours
- Free RV Parking (seasonal)
- Onsite restaurant
- Thirsty Camel bottle shop
- Indoor pool and spa
- Tennis courts and gym
- Free Wifi
- Free daily newspaper and parking



Stanley Seaview Inn

58 DOVECOTE ROAD
STANLEY TAS 7331
PH: 03 6458 1300
info@stanleyseaviewinn.com.au
stanleyseaviewinn.com.au

Accommodation with fantastic views over Stanley, the Nut and beaches - 1 hour north of the Tarkine Drive.



Horizon Deluxe Apartments

88 DOVECOTE RD, STANLEY 7331
PH: 0448 521 115
info@horizonapartments.com.au
horizonapartments.com.au

Luxurious accommodation featuring huge spas with magnificent views over Stanley - within easy access to the Tarkine Drive.